



## INFORMATION : Dump D-Box

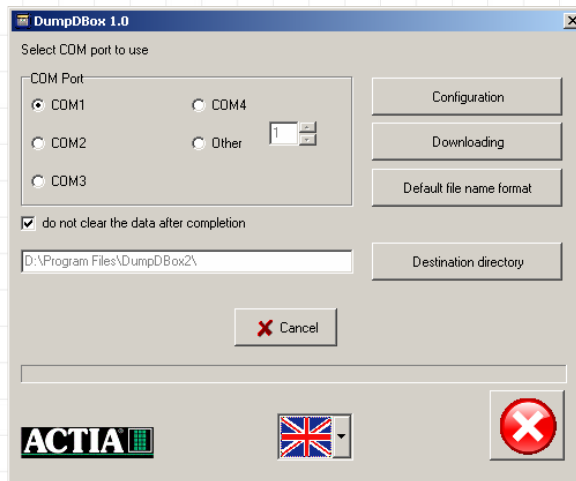
### 1°) Installing the DumpDBox :

- Launch the DumpDBox installation by double clicking on setup.exe.
- Select the default language of the installation.
- Click on Next to go to the next screen
- The 2<sup>nd</sup> screen allows you to modify the path where you install the program (by default program files / DumpDBox).

Valid and launch the installation by clicking on the button Next and at the end select finish.

After the installation, a DumpDBox program is created in the Windows Start Up bar.

Launch the DumpDBox program.



### 2°) During the 1<sup>st</sup> Use :

- Select the language to be used for DumpDBox (flag).
- Choose the tachograph and card file extension format.





**Warning :** the extension format needs to be identical to the one used in the software storage data.

Modify the file destination folder (if necessary).

### **3°) DumpDBox Functions :**

The DumpDBox allows you to ;

- Configure the D-Box (configuration button) :
  - Select the options of the partial downloading menu of the D-Box,
  - Select the D-Box's language,
  - Select the downloading format (complete, partial, in the last X days)
  - Configure date and time for the D-Box real time clock.
- Connect the D-Box to the computer.

- Data transfer :

To transfer data from the D-Box to the computer, select the DOWNLOADING button.

Data that can be recovered :

- Data downloaded from the tachograph's memory,
- Data downloaded from a card through the tachograph,
- Data downloaded from a card in the D-Box while connected (select F1).

**DumpDBox can not read the card while connected to the computer (Push F2)**

### **5°) Integrating Files into the Software Archive :**

Files issued by the DumpDBox can be integrated into any software archive depending on the import function of the file's 1B regulation.

